

CHECK VALVE (NRV)

WAFER TYPE.



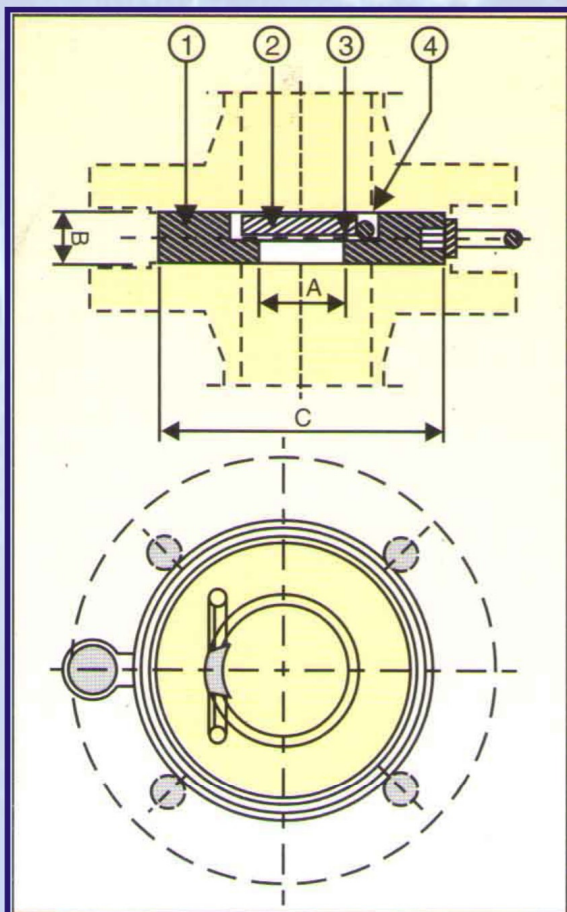
Technical Specification :

Mfg. & Face to Face Dimension : API 6D/ ANSI B16.10

Testing Std. : API 598.

Flange Std. Conformity : ANSI 150/ DIN PN 10/16 & BS 10 Table (D) & (E).

SIZE		HOLE	THICKNESS	DIAMETER
INCH	MM	(A)	(B)	(C)
1"	25	14	17	60
1½"	40	20	18	76
2"	50	27	17	96
2½"	65	40	17	112
3"	80	50	18	127
4"	100	70	18	157
5"	125	92	18	185
6"	150	105	18	211
8"	200	147	21	260
10"	250	190	28	301
12"	300	217	28	365
14"	350	258	28	390
16"	400	310	33	506
18"	450	360	35	540
20"	500	405	35	600
24"	600	460	45	710
28"	700	510	55	800
32"	800	580	60	905
36"	900	700	70	1005
40"	1000	770	80	1120



HYD. TEST PRESSURE	
PRESSURE RATING	SEAT
PN 16 (MAX)	ZERO LEAK/ TIGHT SHUT OFF
TEMPERATURE (MAX.)	
-30° C to 200° C	

BILL OF MATERIAL			
SR. NO.	NOMENCLATURE	QTY	MATERIAL
1	BODY	01	C.I./ M.S./ WCB/ S.S. 304/316.
2	DISC/ FLAPPER	01	C.I./ M.S./ WCB/ S.S. 304/316.
3	'O' RING	01	NITRILE/ PTFE/ VITON/ SILICON/ EPDM.
4	HINGE PIN	01	M.S./ S.S. 304/316.

SALIENT FEATURE/ USER BENEFIT.

1. Very low weight-total weight is only approximately 1/6 the weight of a conventional check valve.
2. Very low face to face dimensions hence space required for mounting is less than 10% of that conventional valves.
3. Self centering in pipeline due to controlled outside diameter, enables easy installation.
4. Short wafer body enables mounting the valve with shorter length fasteners of lesser number compared to flanged swing check valve. Approximately 50% saving in cost of fasteners.
5. Practically maintenance free due to fewer number of parts and simple construction.

MFGR : -

VALSON VALVES MFG. CO.
AHMEDABAD.

Visit us : - www.valsonvalves.com

All dimension are in M.M.